

Request for Quotation

TELL CITY-TROY TOWNSHIP SERVING LINES AT
TELL CITY JR.SR. HIGH SCHOOL AND WILLIAM
TELL ELEMENTARY

AUGUST 10, 2021

ISSUED BY

TELL CITY-TROY TOWNSHIP SCHOOL CORPORATION

REPRESENTATIVE

JOHN SCIOLDO, SUPERINTENDENT

JOHN.SCIOLDO@TELLCITY.K12.IN.US

812-547-3300

Introduction & Background

Tell City-Troy Township Schools is accepting quotes in response to this Request for Quotation (this “RFQ,” or this “Request for Quotation”) in order to find a qualified source to provide serving lines for the William Tell Elementary and Tell City Jr.Sr. High School Cafeterias.

The objective of this Request for Quotation is to locate a source that will provide the best overall value to Tell City-Troy Township School. While price is a significant factor, other criteria will form the basis of our award decision, as more fully described in the Evaluation Factors section of this Request for Quotation below.

Submission Guidelines & Requirements

The following submission guidelines & requirements apply to this Request for Quotation:

1. First and foremost, only qualified individuals or companies should submit quotations in response to this Request for Quotation. **Submitters must provide proof they are not debarred from conducting business.**
https://www.sba.gov/sites/default/files/forms/form_tr1623_0.pdf
2. Vendors intent on submitting a quotation should notify the representative identified on the cover page no later than August 27, 2021.
3. Vendors must list at least 3 references for purchases that are substantially similar to this purchase as part of their response.

4. A price quotation page must be provided. This price quotation should indicate the overall fixed price and a breakdown of the costs that combine to said overall price.
5. If you have a standard set of terms and conditions, please submit them with your quotation. All terms and conditions will be subject to negotiation.
6. Questions should be addressed to the Superintendent, John Scioldo. Email is preferred: john.scioldo@tellcity.k12.in.us Voice: 812-547-3300
7. Vendors are responsible for ensuring design aspects of recommended products meet the needs of the corporation. A reference image for both buildings has been provided in this RFQ but is not to scale. It is highly recommended that vendors schedule an on-site visit to verify dimensions and fit. Appointments may be made through the Superintendent via email john.scioldo@tellcity.k12.in.us or voice: 812-547-3300.
8. Questions should be received and site visits made by 09.08.2021.
9. Quotations must be received by 6:30 PM September 14, 2021 to be considered.
10. Quotations must remain valid for a period of 60 days.

Product Description

The school corporation is currently interested in purchasing:

William Tell Elementary:

(Quantity 2) Hot Food Table Approximately 60- $\frac{3}{8}$ " x 33" x 34"

Top must be at least 14 ga Stainless Steel

(AA) line up locks

Four sided recessed for sheet pans

Stainless or fiberglass body

TW4 Hot food wells

60" sloped front protector

LED Lighting preferred

Stainless steel adjustable legs

Minimum 2 daisy chain outlets

Storage shelves (14" and 28")

(Quantity 2) Cold Food Table approximately 66"x33"x34"

Top must be at least 14 ga Stainless Steel

(AA) line up locks

Four sided recessed for sheet pans

Stainless or fiberglass body

Fixed glass in front of cold pan with 8" pass through area

LED Lighting preferred

Stainless steel adjustable legs

Minimum 2 daisy chain outlets

Storage shelves (28")

Pan-temp-est aire (or equivalent) built in

Adapter bars

(Quantity 2) Tray dispensers

Approx 28- $\frac{3}{8}$ "x 30"x34"

28" Tray stand

Silverware cut outs

(AA) Line up locks

Silverware holders

Stainless steel or fiberglass body

Stainless steel adjustable legs

In cabinet electrical outlet

Tell City Jr.Sr. High School

(Quantity 4) Hot Food Counter Approximately 96- $\frac{3}{8}$ "x30"x36"

Top must be at least 14 ga Stainless Steel

(AA) line up locks

Four sided recessed for sheet pans

Stainless or fiberglass body

(3) Hot food wells

10"x96" tray slide

Fold down end shelf

96" adjustable front protector/ $\frac{1}{2}$ front Glass at cold well

Led lights

3 Pan-temp-est aire (or equivalent) built in

Adapter bars

LED Lighting preferred

Stainless steel adjustable legs

Storage shelves (14" and 28")

(Quantity 2) Solid Top Counter Approx 30"x30"x36"

Top must be at least 14 ga Stainless Steel

Line up locks

Stainless steel or fiberglass body

30" vertical glass front protector

Stainless steel adjustable legs

Storage shelves (14")

(Quantity 2) Cold Food Counter Approx 96- $\frac{3}{8}$ "x 30"x36"

Top must be at least 14 ga Stainless Steel

Line up locks

Four sided recessed for sheet pans

Stainless steel or fiberglass body

Frost top or equivalent with remote

3 Pan-temp-est aire (or equivalent) built in

Adapter bars

(2) (A) 10"x86" Beaded SS Tray Slide

Self Service Double Service Food Protector with Frost Top Display Half front glass on Top

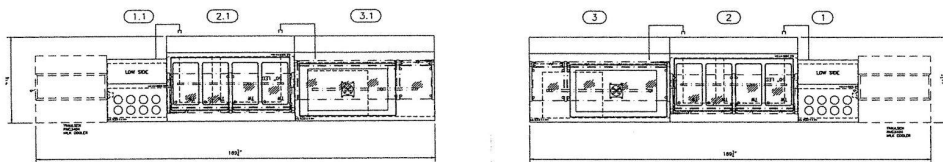
LED lights preferred

Stainless steel adjustable legs

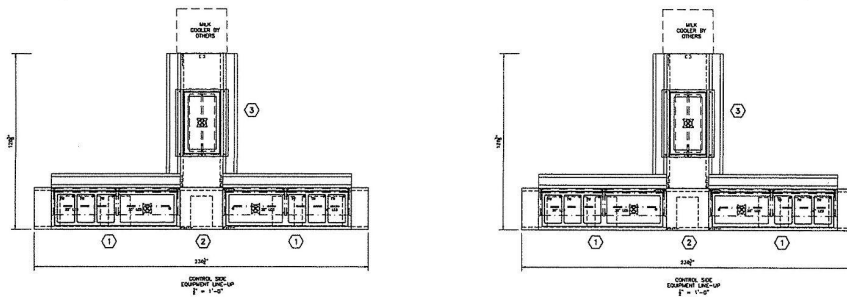
In cabinet electrical outlet

Reference Image:

William Tell Elementary



TC JR.SR. High School



Each RFQ must include:

- Warranty Information
- Installation
- Any exclusions

Total cost should also include:

- Delivery

RFQ Timelines

The Request for Quotation timeline is as follows:

Request for Quotation Issued	08.10.2021
Request for Quotation Due:	09.14.2021 6:30 PM
Evaluation of Quotes	09.14.2021 Through 09.24.2021
Purchase Award / Notification to Unsuccessful Submitters	By 10.01.2021
Delivery and Setup Completed by:	TBD

Evaluation Factors

Tell City-Troy Township School Corporation will rate quotations based on the following factors, with cost being the most important factor:

1.	Cost	50 points
2.	Responsiveness to the device specifications set forth in this Request for Quotation	20 points
3.	Warranty	20 points
4.	Relevant past performance/experience	10 points

Tell City-Troy Township School Corporation reserves the right to award to the bidder that presents the best value to Tell City-Troy Township School Corporation as determined solely by Tell City-Troy Township School Corporation in its absolute discretion.